

Safety Alert

Mines Inspectorate

Safety Alert Issue No.: CIM/02/2024

Date: 25 January 2024

All Mines

HPI – Mine Light Vehicle Overturn Incident

A High Potential Incident (HPI) occurred at the end of a day shift, whilst the driver was conducting usual radio call prior to driving downhill through narrow section of the road from the mine operations' base area. The driver completed the radio call and as he was placing the mouthpiece of the radio back onto the dashboard mouthpiece holder, the vehicle continued moving and the right-side front and rear wheels climbed a shotcrete bund wall. The light vehicle tilted from the right side as it reached the maximum height of the shotcrete bund wall and landed on its roof on the main road with all four wheels facing upwards.

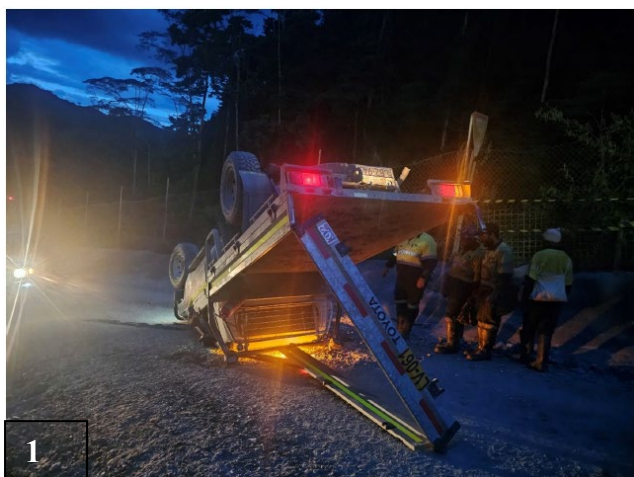


Photo 1: Back view of light vehicle (ute)

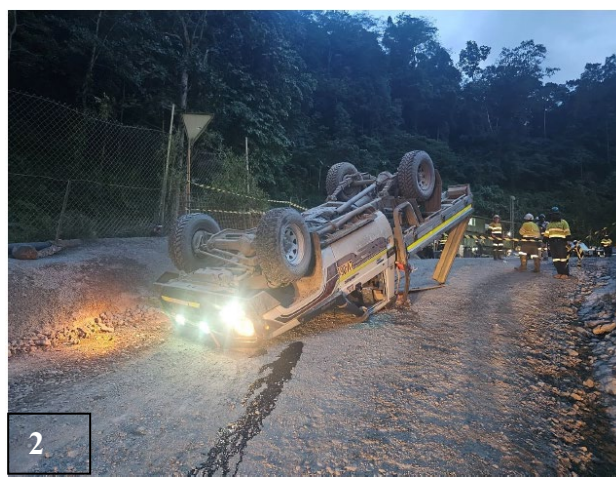


Photo 2: Fronth view of light vehicle (ute)

INITIAL FINDINGS:

- The driver violated the existing traffic management plan.
- The driver's focus was distracted, hence, he (driver) had high risk driving behavior.
- Mechanical failure of LV braking system (lack of proper maintenance system).
- Inadequate traffic management system.
- Non-compliance to mine site radio communication process whilst driving.
- Driver failure to drive to road condition.
- Driver's lack of competency for safe driving.
- LV travelling at higher speed.

NOTE: *This safety alert may be displayed at conspicuous places within the project area and the information widely disseminated amongst all concerned.*